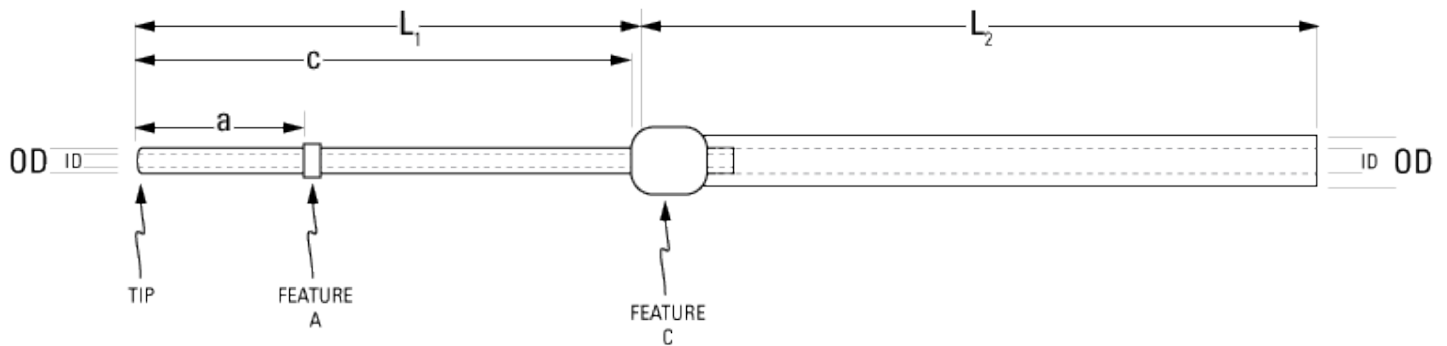


Part Number: **C20PU-RBD1415**



*not to scale*

Full Description: Catheter for rat bile duct, PU 2Fr 9.5cm-024x055 PU 70cm, collar @ 1.0cm. Fits 22ga.

Unit:  Pouch Desc:  Pouch:

Approx Dead Vol:   $\mu$ L Connects to:  EO Sterilized:

Intended Species:  Vessel:

Usage Notes:

## TUBING

Tip:  Length 1: L1:  cm Length 2: L2:  cm  
 Material (IDxOD):  Material (IDxOD):

## FEATURES

Distal (tip) end		Location	Fixed
Feature A:	<input type="text" value="Small silicone collar for 2Fr (0.9mm OD), 1mm wide"/>	a: <input type="text" value="1.0"/> cm	<input type="checkbox"/>
Feature B:	<input type="text"/>	b: <input type="text"/> cm	<input type="checkbox"/>
Feature C:	<input type="text" value="Extra large silicone collar (2.2mm OD), 3mm wide"/>	c: <input type="text" value="9.5"/> cm	<input checked="" type="checkbox"/>

Proximal end		Location	Fixed
Feature Z:	<input type="text"/>	z: <input type="text"/> cm	<input type="checkbox"/>
Feature Y:	<input type="text"/>	y: <input type="text"/> cm	<input type="checkbox"/>
Feature X:	<input type="text"/>	x: <input type="text"/> cm	<input type="checkbox"/>

## PARTS ADDED TO POUCH

Part 1:  Part 2: