

# JAX<sup>TM</sup> MICE

IMPORTING SPECIALISED STRAINS THROUGH CHARLES RIVER EUROPE



# Contents

---

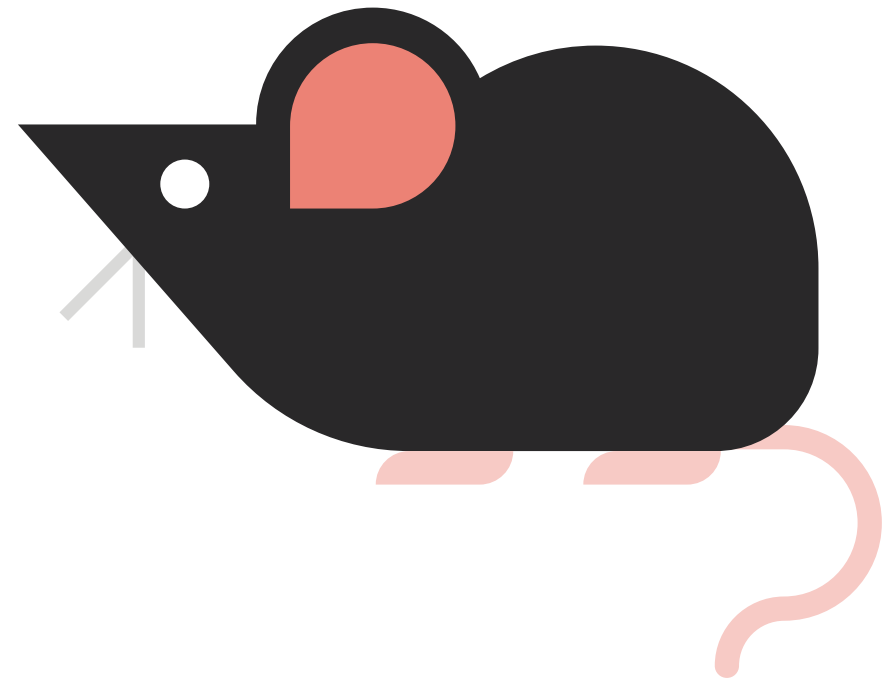
|  |          |   |           |
|--|----------|---|-----------|
| <b>Introduction.....</b>   | <b>1</b> | <b>Imported JAX™ Mice Strains by Therapeutic Area .....</b> | <b>10</b> |
| <b>Benefits of Ordering JAX™ Mice through Charles River and Our Distribution Partners.....</b> | <b>2</b> | <b>Finding JAX™ Mice.....</b>                               | <b>11</b> |
| <b>Importation Process .....</b>   | <b>3</b> | <b>Health Status.....</b>                                   | <b>12</b> |
| <b>Availability and Lead Times of Imported JAX™ Mice.....</b>                                  | <b>4</b> | <b>Licensing and Terms of Use .....</b>                     | <b>13</b> |
| <b>Standard Supply Definitions.....</b>  | <b>5</b> | <b>Dedicated Supply .....</b>                               | <b>14</b> |
| <b>Further Supply Definitions.....</b>   | <b>8</b> | <b>Ordering Imported JAX™ Mice – FAQs .....</b>             | <b>15</b> |
| <b>Expediting Orders and Transport Considerations.....</b>                                     | <b>9</b> | <b>Contact Us.....</b>                                      | <b>16</b> |

# Introduction

---

Used by researchers around the world, JAX™ Mice are the most frequently cited strains in biomedical research publications. They are supported by world-renowned scientific and technical staff, and are produced according to the highest standards of animal health and genetic quality. JAX™ Mice strains include commonly used inbred strains as well as thousands of specialised disease models and genetically engineered strains.

Through [The Jackson Laboratory's agreement with Charles River](#), European researchers have access to over 11,000 JAX™ Mice strains suitable for research applications covering every major therapeutic area.



# Benefits of Ordering JAX™ Mice through Charles River and Our Distribution Partners

---

**Our pan-European customer service teams are highly experienced in the process of ordering mice from The Jackson Laboratory. Benefits of ordering via Charles River include our ability to:**

- Process required paperwork
- Import mice using the Charles River import licence (where required)
- Handle all correspondence with The Jackson Laboratory
- Organise shipments directly to your facility
- Provide transport on temperature-controlled vehicles
- Offer invoicing in local European currencies
- Provide local contact persons speaking European languages



# Importation Process

---

1

Select a JAX™ Mice strain of interest. Please contact us if you require assistance in making a selection or need more information regarding your chosen strain.

2

Request a JAX™ Mice order form from Charles River.

3

Upon receipt of the form, Charles River will provide availability details and a price quote.

4

The final steps will be handled by our teams, including:

- Order management
- Freight processing
- Documentation for customs purposes
- Customs and veterinary clearance
- Taxes and duties

# Availability and Lead Times of Imported JAX™ Mice

---

Inventory levels of all strains bred at The Jackson Laboratory are continually reviewed and adjusted to keep pace with research demand. The availability of strains and quantities that can be shipped from the US will often depend on whether they are higher-volume live production strains, or part of the JAX™ Repository.

## The JAX™ Repository



A collection of 11,000 unique strains divided between Live Repository strains and Cryopreserved Repository strains (for mice with infrequent demand). JAX™ Repository live colonies tend to be smaller with longer lead times for requests of larger cohorts of mice. These strains are also more subject to biologically-driven breeding variability, as well as rapid changes in research demand (typically based on recent publications).

## Time Sensitive



In the event that your research schedule is particularly time-sensitive, we always recommend considering dedicated supplies of key mouse strains and/or speed expansions to ensure you get what you need, when you need it.

# Standard Supply Definitions

---

## JAX™ Production Strains

Order quantities: 10 to 100 or more available

Lead time: Minimal

Number of strains: The most popular 150+ strains

Health status: Colonies are maintained in multiple high-health-status rooms.



### Readily Available

Sized to accommodate large orders.



### Available Now

Sized to accommodate mid-sized orders.

# Standard Supply Definitions, continued

---



## Repository Live

Order quantities: 4-6 mice (larger cohorts may be available)

Lead time: Typically 6-12 weeks

Number of strains: Approximately 1 800 unique mice

Health status: Colonies are maintained in single high-health-status rooms.

### Notes:

Breeding colonies fluctuate in size depending on current demand. If a strain is not immediately available, an estimated lead time will be provided in 2-3 business days. General considerations:

- Mice are typically delivered at 4-8 weeks of age.
- No age requests are accepted for breeder pairs or when ordering fewer than five mice per strain.
- If cohorts of mice (five or more of one gender per strain) are needed at a specific age range for experiments, we will do our best to accommodate your request.
- Repository Live strains have one of four availabilities. Please refer to the strain datasheet for the average lead time on a specific strain of interest.
  - One week average lead time for up to 40 mice
  - 0-2 week average lead time for 10 or more mice with age range
  - 2-4 week lead time for up to four mice at 4-8 weeks old; age requests not accepted
  - 3-6 week average lead time depending on quantity; age requests not accepted



# Standard Supply Definitions, continued

---



## JAX Repository Cryopreserved

JAX™ Mice strains with limited and infrequent demand are maintained in a cryopreserved state.

Order quantities: At least two carriers for each strain ordered. The total number, sex, and genotypes provided will vary, although typically eight or more animals are provided.

Lead time: Cryorecovery requires 11-14 weeks (possibly longer for higher quantities)

Health status: SOPF

Number of strains: 6 200+ strains

## Made-to-Order Embryos

In order to reduce import complexity, lead time, and costs, many strains maintained as frozen sperm are now available for shipping as embryos rather than requiring complete cryorecovery to live mice prior to shipping, bringing the total number of strains for which embryos will be available to 5,400.

Order process: Same as cryorecovery to live mice

Lead time: Six weeks from order

Quantity: 60 embryos per order (Two straws of 30)

Cancellation Policy: Standard

Embryo recovery to live mice: Resuscitation of embryos can either be done via Charles River's European embryology lab, or by the organization purchasing the embryos. Please note that no guarantee is given for resuscitation. Backcrossing should be done with original lines (e.g., C57BL6/J) and not substrains.

The Jackson Laboratory supply information webpage can be [found here](#).

Contact **Customer Service** to place an order or for more information.

# Further Supply Definitions

---



## **Available for Pre-Order**

Colony under development; pre-orders strongly encouraged. Estimated availability date can change if demand increases during development or if strain exhibits less than typical reproductive performance. Shipments will be prioritised by order date. Contact **Customer Service** to place an order.

---



## **Available for Registering Interest**

Not available for ordering yet; register interest to be informed of changes in availability or contact **Customer Service** for more information.

---



## **Availability Varies**

Availability is determined by The Jackson Laboratory scientist holding the strain. Contact **Customer Service** for more information.

---

# Expediting Orders and Transport Considerations

---

Many unique specialty strains are maintained in breeding colonies sized to demand and may have limited immediate availability. Orders for these strains often can be filled more quickly with some flexibility in terms of:

- Requested age (include an age range or multiple acceptable ages)
- Sex (either or both sexes)
- Delivery dates
- Partial shipments

Our experienced customer service staff aim to make the process as smooth as possible. Please be aware that Charles River will not be responsible for any damages that could arise while mice are in the care of non-Charles River transport companies (e.g., airlines), and that delays can occur during adverse weather (for animal welfare reasons).



# Imported JAX™ Mice Strains by Therapeutic Area

---



## Cardiovascular

Browse popular JAX™ Mice for cardiovascular research, with phenotypes for the most popular models including induced, transgenic, and mutant models, as well as options for newly available models or those under development.



## Metabolic Diseases

Leverage the world's largest collection of diabetes and obesity mouse models by using one of these metabolic disease strains for your investigations.



## Oncology

There are hundreds of JAX™ Mice strains available for cancer research and drug efficacy testing. The table posted on The Jackson Laboratory website summarises the tumour latency and other features for over 40 of the most commonly used JAX™ Mice cancer models.



## Rare Diseases

The Jackson Laboratory offers the world's largest collection of spontaneous, targeted, and transgenic mutant mouse strains; hundreds of which model rare diseases.



## Neurobiology

Browse for popular and new models of neurobiology, or find focused resources for Alzheimer's disease, amyotrophic lateral sclerosis (ALS), Down syndrome, Huntington's disease, muscular dystrophy, Rett syndrome, and more.

# Finding JAX™ Mice

---

Search for JAX™ Mice by strain, stock number, keyword, gene, allele, or synonym on [The Jackson Laboratory website](#).

Helpful tips:

- Use the drop-down list to choose an appropriate gene, synonym, or disease term that appears following the entry of three or more characters in the search box. This will return all strains that contain the selected term.
- Refine your search using the check boxes on the left side of the search interface. Current featured searches include: popular strains, Cre- expressing, Cre- reporter, NSG portfolio, metabolic portfolio, and immunodeficient portfolio. Other refinements, such as product type, stock type, attribute, or generation method, can also help narrow the choices. You can select as many boxes as you want and remove any terms by unchecking the box or removing the term under the search bar.
- Add additional search terms to refine your strain list. These can be either from the drop-down list or free text terms.
- Use quotations to perform a text string search. For example, searching for T cell will search individually for both T and cell and return a non-specific list of strains. If you instead enter “T cell”, the search will return all instances where that text string appears in the description of the strain data sheet.
- To remove a search term, click the X on the right side of the search term box under the search bar or select the green “Clear all” button.

Once you’ve found an appropriate strain, the JAX™ strain data sheets will provide more information, including characteristics, primary references, genotyping protocols, availability, and licensing requirements. You can also find a list of related strains (either by gene, allele, or collection) from the related strains section.

# Health Status

---

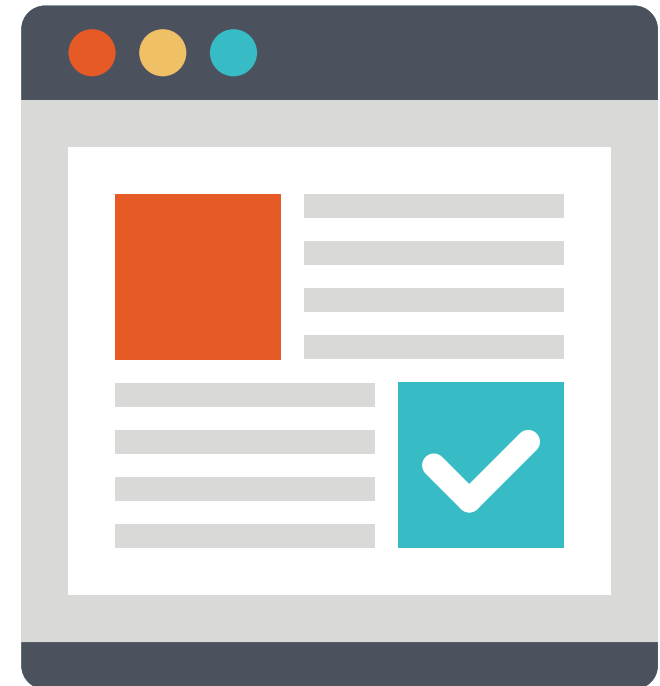
Health reports for all live strains can be found on the individual strain sheets under the Technical Support tab (“Animal Health Reports” option) on The Jackson Laboratory website. If the distribution room is known, links to all health reports can be found at, [www.jax.org/jax-mice-and-services/customer-support/animal-health/health-status-reports](http://www.jax.org/jax-mice-and-services/customer-support/animal-health/health-status-reports).



# Licensing and Terms of Use

---

The Terms of Use outline the general terms and conditions for purchasing JAX™ mice. Certain specialised strains, including the NSG mouse, will require a Material Transfer Agreement (MTA) or commercial licence. The licensing information is in the Terms of Use tab on the strain page. Information on terms of use and licensing can be found on the strain sheets under “Terms of Use.” If you have any specific questions relating to licensing, please contact your local [Charles River office](#) or email [tjlca@jax.org](mailto:tjlca@jax.org) directly.



# Dedicated Supply

---

As a result of the collaborative agreement between The Jackson Laboratory and Charles River, our European facilities are able to offer you dedicated supplies of certain JAX™ Mice strains that are typically only available as imported strains or recovered embryos. Our four European contract breeding locations all employ our [Internet Colony Management \(ICM™\) system](#), providing convenient 24-hour access to your colonies. Contact your local office for additional information.





# Ordering Imported JAX™ Mice – FAQs

---

**Q. Can a single shipment be arranged when ordering multiple repository live strains or a cryo-recovered strain together with a repository strain?**

**A.** Single shipments of more than one repository live strain are challenging to coordinate, due to the varied availabilities for each strain. If one of the strains has a longer wait time, the shipment will be held until all strains are ready to ship. This could result in mice being delayed several weeks, or even months. In addition, special instructions regarding the orders to be coordinated need to be clearly marked on the strain order form for each strain involved.

We highly discourage coordinating a cryorecovery order shipment with an order for a repository live strain due to the many weeks required to fulfil a cryorecovery order (13-16 weeks) that will unnecessarily hold up the order for repository live mice, particularly if a second recovery is needed for the cryopreserved strain.

**Q. What is the normal crate density, and how will factors such as strain, age, and weight affect the number of mice per crate?**

**A.** Crate density is dependent on specific strain characteristics such as weight, age, and other behavioural factors. The maximum number of mice per crate

is 20. If the crate is divided, then a maximum of 10 mice can be housed per side. If the mice are obese, older, or aggressive, fewer than 20 mice per crate are allowed. In some instances, mice will be packed at low densities to retain housing configurations, particularly for males.

Estimates for the minimum number of crates are provided with the order confirmation and are updated when the order is scheduled to ship. However, we cannot guarantee that estimate due to changes that can occur when the individual order is packed and shipped.

**Q. Can Charles River Europe import MMRRC mouse strains housed at the Jackson Laboratory?**

**A.** Charles River is authorised to provide concierge services to assist distribution of MMRRC mouse strains to academic and non-profit organizations in Europe, Japan, Taiwan, and Korea. Please contact us should you have any questions regarding this authorisation.

For further information on the MMRRC (Mutant Mouse Resource and Research Center) please visit the [JAX website](#).

# Contact Us

---

For further information, please contact Charles River or one of our official distributors.

| <b>GEOGRAPHICAL AREA</b>   | <b>PHONE</b>         | <b>EMAIL</b>          |
|--|----------------------|-----------------------|
| France, Belgium, Luxembourg, Switzerland (French-speaking)                   | +33 (0)4 74 01 6917  | arorders@crl.com      |
| Germany, Austria, The Netherlands, Luxembourg, Switzerland (German-speaking) | +49 (0) 9761/406-0   | dbestell@crl.com      |
| Italy, Greece, Balkan States   | +39 039 509915       | calorders@crl.com     |
| United Kingdom and Republic of Ireland                                       | +44 (0)1843 823575   | crukcsd@crl.com       |
| Spain and Portugal   | +33 (0)4 74 72 28 65 | barcsd@crl.com        |
| Denmark, Lund, and Malmö   | +45 3360 0517        | orders-dk@scanbur.eu  |
| Sweden   | +46 8 594 767 80     | orders-se@scanbur.eu  |
| Norway   | +47 6706 2920        | orders-no@scanbur.eu  |
| Finland  | + 358 40 583 2999    | orders-fin@scanbur.eu |
| Czech Republic and Slovakia  | + 420 731 156 552    | info@velaz.cz         |
| Poland   | + 48 61 861 60 04    | info@animalab.pl      |
| Hungary  | + 36 704 314 441     | info@animalab.hu      |

# Notes

---

---

---

---

---

---

---

---

---

---

---

The logo features a stylized white wave symbol above the text.

charles river  
[www.criver.com](http://www.criver.com)