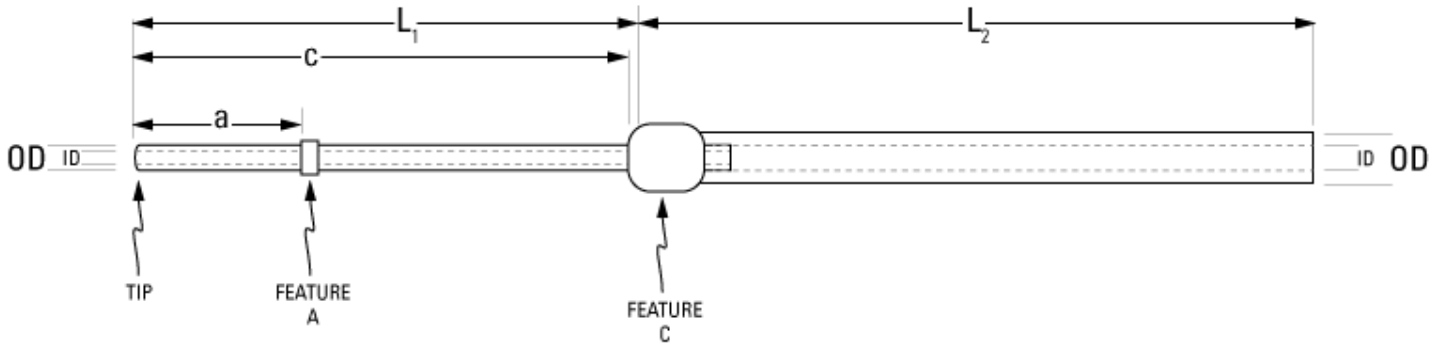


Part Number: **C10PU-RFA1310**



not to scale

Full Description: Catheter for rat femoral artery, 1 to 3Fr, 30cm, collar @1.2cm. Fits 22ga.

Unit: each **Pouch Desc:** Rat FAC 1-3Fr 30cm **Pouch:** 4x10

Approx Dead Vol: 75 μ L **Connects to:** 22ga **EO Sterilized:**

Intended Species: rat **Vessel:** femoral artery

Usage Notes:

TUBING

Tip: rounded **Length 1** **Length 2**
L1: 5 cm **L2:** 25 cm
Material (IDxOD): PU 1Fr (.18x0.35 \pm .05mm) **Material (IDxOD):** PU 3Fr (.62x1.02 \pm .03mm)

FEATURES

| Distal (tip) end | | Location | Fixed |
|------------------|--|-----------|-------------------------------------|
| Feature A: | Small silicone collar for 1Fr (0.6mm OD), 1mm wide | a: 1.2 cm | <input type="checkbox"/> |
| Feature B: | | b: cm | <input type="checkbox"/> |
| Feature C: | Large silicone collar for 3Fr (1.7mm OD), 3mm wide | c: 5.0 cm | <input checked="" type="checkbox"/> |
| Proximal end | | | |
| Feature Z: | | z: cm | <input type="checkbox"/> |
| Feature Y: | | y: cm | <input type="checkbox"/> |
| Feature X: | | x: cm | <input type="checkbox"/> |

PARTS ADDED TO POUCH

Part 1: **Part 2:**